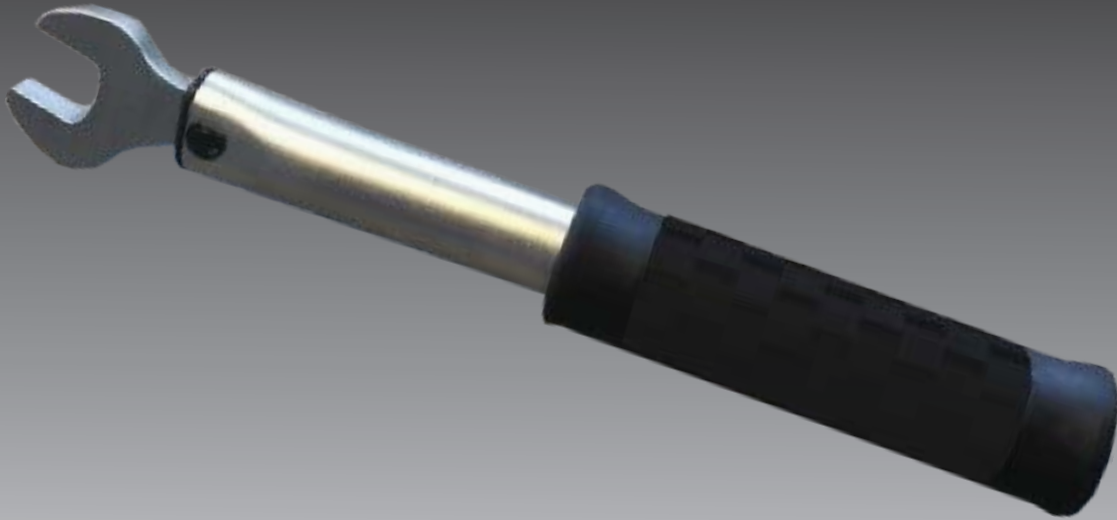




PW18916 & PW18058 Preset Valve Wrenches



PW18916 &
PW18058

Preset Valve Wrenches

Open-end choices for 5/8" or 9/16" valve nuts. A durable and robust open-end due to chrome-vanadium alloy steel.

The operator receives feedback indicating desired torque value is reached through the robust internal spring release.

Torque Settings

The 9/16" open-end is set to 42 in-lbs and suitable for TV-570 series valves.

The 5/8" open-end is set to 100 in-lbs and suitable for TV-540 and 550 series valves.

Note: Always consult with manufacturer instructions to confirm desired torque.

Preset Valve Wrenches					
<i>For TV-570 Series Valves</i>			<i>For TV-540 & 550 Series Valves</i>		
Torque setting	Open-end	Model #	Torque range	Ratchet size	Model #
42 in-lbs	9/16"	PW18916	100 in-lbs	5/8"	PW18058