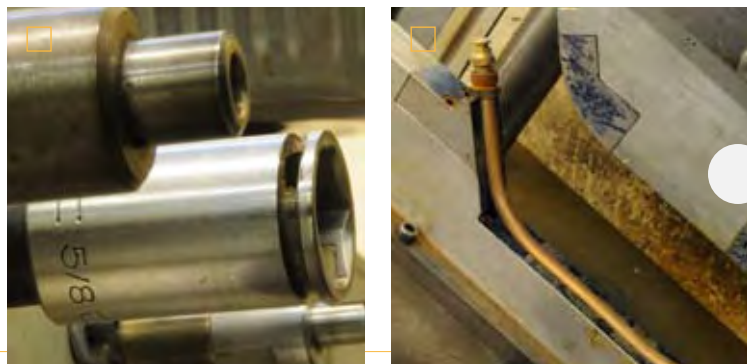




HALTEC CORPORATION USES NUMEROUS STATE-OF-THE-ART AUTOMATIC C&C TURNING MACHINES DURING OUR MANUFACTURING PROCESS.



HALTEC STOCKS VALVES FOR ALL APPLICATIONS: AUTOMOTIVE, TRUCK, BUS, AGRICULTURAL, AND OFF-ROAD.



HALTEC HAS BEEN REGISTERED AS AN ISO CERTIFIED COMPANY SINCE 1998. OUR MANUFACTURING QUALITY AND INSPECTION PROCESSES ARE ASSESSED BY AN INDEPENDENT CERTIFICATION BOARD EVERY SIX MONTHS.

HALTEC - 2009

□ TIRE VALVE SYSTEMS & TECHNOLOGY FOR THE WORLD

For nearly 40 years, Haltec Corporation has been the leader in the tire valve industry. When underground mines were transitioning from rail wheels to rubber tires, Haltec was there to design and manufacture the tire valve systems required to meet their technical needs.

Haltec maintains its leadership position as a major manufacturer of specialized tire valve systems. Many new product innovations were introduced by Haltec, including the Full-Flo and Super Large Bore valve designs. These designs provided the tire industry the unique products required to achieve faster flow

rates, decreased downtime and more efficient tire management. The ever increasing size of mining and construction tires further challenged Haltec engineering to design and manufacture our wide variety of valve systems to meet these demands. These include the Mega Bore Tire Valve System, which has a twenty-five time faster rate of flow than a large bore valve.

Today, Haltec Corporation is recognized worldwide as the leading manufacturer of specialty tire valve systems and pressure inflation hardware. Haltec's 45,000 square foot facility in Salem, Ohio maintains its corporate headquarters, manufac-

turing, design, engineering and distribution services. As an ISO 9001/2000 With Design certified company, Haltec Corporation's Quality Policy is to lead the tire valve industry by meeting or exceeding industry standards and customer requirements at a competitive price. Our on-site engineering and custom design department is complemented with a state-of-the art machine shop and soldering, fabrication, custom-bending and product assembly services, all prepared to produce products to meet your inflation and pressure maintenance needs. Haltec has refined a global network of distribution channels and continues to grow sales to its target markets.

We here at Haltec hope you, our customer, will find this catalog easy to use and informative. We have included "Tech Tips"

throughout the text, providing information on proper inflation and our products. You will also find many product innovations, like our IN-95 inflation gun for use with our Super Large Bore, Z-Bore and Mega Bore lines. The IN-95 allows for the removal and replacement of the core housing in all three product lines.

Haltec Corporation's products and services are designed to provide safe, efficient and accurate tire inflation. Our goal is to provide the tire industry with the equipment and training required to enhance any organization's "Tire Management Program." Whether using air or nitrogen, the tire's psi and tread depth need to be accurate, and the method of inflation must be safe, simple and fast.