

BUDD NUT WRENCHES

Wrenches hold outer cap nut on dual wheels while turning inner nut. Lip fits in hole to secure wrench in place. Sizes offered fit standard and metric Budd nuts.

BUDD NUT WRENCHES

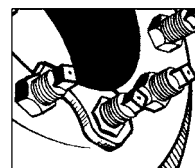
PART NO.	EDP NO.	DESCRIPTION	SIZE	WEIGHT
TX-9®	30609	SAE	1 1/2" (38mm)	.73 lbs (.3kg)



TX-9®



TX-241

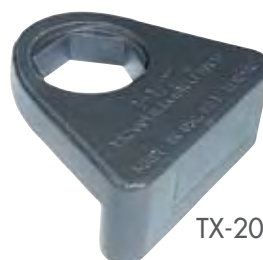


HEAVY-DUTY CAP NUT WRENCHES

Heavy-duty design will not slip out of position. Wrench rests snugly against the center hole, reducing the possibility of rim damage. Ideal for aluminum wheels. Patent D446, 429.

HEAVY-DUTY CAP NUT WRENCHES

PART NO.	EDP NO.	DESCRIPTION	SIZE	WEIGHT
TX-200	30618	SAE	1-1/2"	2.6 lbs (1.2kg)
TX-241	30619	Metric	41mm	2.6 lbs (1.2kg)



TX-200

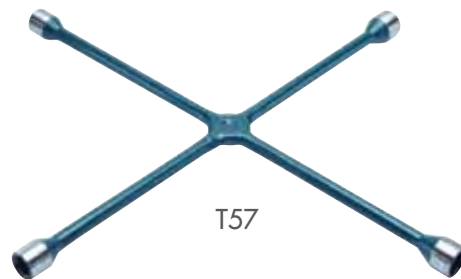
LUG WRENCHES:

PROFESSIONAL LUG WRENCH:

America's premier professional lug wrench for cars, light trucks, SUV's, RV's and vans. Drop forged centers for extra strength. Keep in trunk for emergencies or everyday use.

PROFESSIONAL LUG WRENCH

MODEL	EDP NO.	DESCRIPTION	SOCKET SIZES	LENGTH	STOCK	WEIGHT
T57	35657	Passenger	3/4", 13/16", 7/8", 15/16"	23" (58cm)	5/8" (16mm)	4.5 lbs. (2kg)



T57

STANDARD LUG WRENCHES:

Welded center construction for strength and durability. Premium grade, special bar quality steel for extra strength.

STANDARD LUG WRENCHES

MODEL	EDP NO.	DESCRIPTION	SOCKET SIZES	LENGTH	STOCK	WEIGHT
T59	35659	Passenger	3/4", 13/16", 7/8", 15/16"	22" (56cm)	5/8" (16mm)	4.2 lbs. (1.9kg)
T90	35690	Light Truck	7/8" deep well, 15/16", 1", 1-1/16"	25" (64cm)	3/4" (19mm)	7.2 lbs. (3.2kg)



T59