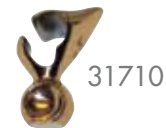


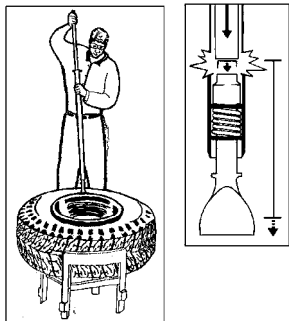
## 31710 BEAD HOLDING DEVICE

Holds the bead in place against the wheel when mounting the tire onto the wheel. Not a prying device.



### IMPACT BEAD BREAKERS

Bead breaker loosens beads with bead-breaking foot and ram bar, but never cuts the bead of the tire. The wedge foot is forced between the bead and rim flange. Breaker is designed for shop or road use. No other bead breaker tools are necessary.



### IMPACT BEAD BREAKERS

PART NO.	EDP NO.	DESCRIPTION	LENGTH	LENGTH EXTENDED	HEAD WEIGHT
T26B	35926	Heavy-duty	50" (127.0cm)	80" (203.2cm)	24 lbs. (10.9kg)



### HANDLED BEAD-BREAKING WEDGES

Use on passenger, truck, bus, farm, tractor and aircraft tires. Use with soft-face hammers. Breaks beads quickly and easily. Handle serves as lever to push bead away from rim.

### WEDGES

PART NO.	EDP NO.	DESCRIPTION	REPLACEMENT HANDLE	LENGTH	HEAD WEIGHT
T11E®	35329	Wood-Handled Wedge	T11EH	30" (76.2cm)	8 1/2 lbs. (3.9kg)
TG11E	35429	Fiberglass Handled Wedge	TG11EH	32" (81.3cm)	8 1/2 lbs. (3.9kg)
TG11D	35427	Fiberglass Handled Wedge	TG11DH	18" (46cm)	4.8 lbs (2.2kg)

### EASY-LIFT™ BEAD SEATING STAND

Reduces back strain while handling 22.5" tire and wheel assemblies. Aligns beads concentrically on wheel for improved ride and longer tire life. Portable for field service, or can be bolted to the floor. Made of high-grade steel. Length: 24" high x 26" wide x 27" long. U.S. Patent No. 7,225,849.



### EASY-LIFT™ BEAD SEATING STAND

MODEL	DESCRIPTION	WEIGHT
36016	Standard Crown for 8-3/4" diameter hubs	36 lbs. (16.4 kg)
36017	Large Crown for 11" Euro hubs	37 lbs. (16.8 kg)

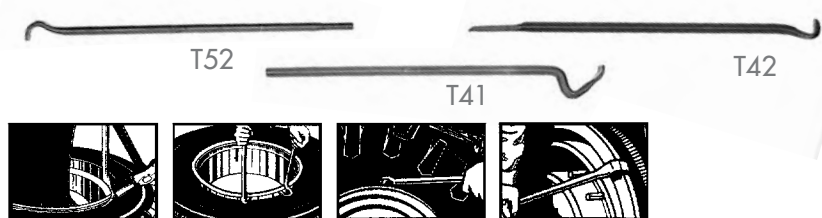


### REPLACEMENT HANDLES

PART NO.	EDP NO.	DESCRIPTION	FOR HAMMER NO.	LENGTH	HEAD WEIGHT
T11EH	35129	Hickory Replacement Handle	T11E	30" (76.2cm)	1 1/4 lbs. (.6kg)
TG11EH	35229	Fiberglass Replacement Handle	TG11E	32" (81.3cm)	3 lbs. (1.4kg)

### BEAD-BREAKING TOOLS TRUCK/FARM/OTR

These lightweight, portable tools are a great alternative to the handled bead breaking wedges or hydraulic bead breakers. One end is used to remove frozen or rusted beads from all types of rims. The other end can be used as a leverage bar when inserted into the 35695 or 35697 Truck Wrench.

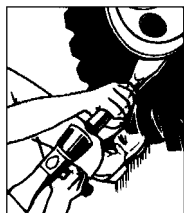


### BEAD-BREAKING TOOLS TRUCK/FARM/OTR

PART #	EDP #	DESCRIPTION	LENGTH	STOCK	WEIGHT
T41	33341	Swan Neck	30" (76.2cm)	7/8" (22mm)	5 1/2 lbs. (2.5kg)
T42	33342	30" Bead Breaker	30" (76.2cm)	7/8" (22mm)	4 3/4 lbs. (2.2kg)
T52	34652	Bead Breaker Leverage Bar	33" (83.8cm)	7/8" (22mm)	5 1/2" lbs. (2.5kg)

### T26A (32126) BEAD-BREAKING TOOL/DRIVING IRON

Driving iron is used for loosening rusted truck and bus beads. Tool blade is forged extra wide and curved to fit the rim. Will speed truck repair work and save labor time.



### BEAD-BREAKING TOOL/DRIVING IRON

LENGTH	STOCK	WEIGHT
11 3/4" (29.9cm)	1 1/4" (32mm)	3 3/4 lbs. (1.7kg)

KENT TOOL