

Patented spring-clip insert holds cover tight to the nut, yet permits easy installation and removal. Available for ball seal cap nuts for stud located wheels and the new Alcoa Hug-A-Lug® nut cover for the two-piece flange nut for hub-piloted wheels. Now Alcoa Hug-A-Lug nut covers come in handy cardboard display container for easy retail display. The versatile design of the 10-pack nut covers allows it to stand alone or hang on a display rack.

NOTE: Orders are accepted for less than case quantities.

H-1503

10 H-150 Hug-A-Lugs in a cardboard display container. Versatile 10-pack design.



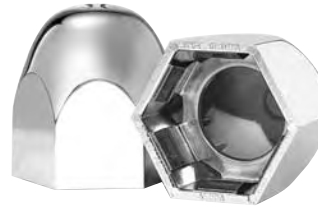
H-1813

10 H-181 Hug-A-Lugs in a cardboard display container. Versatile 10-pack design.



FOR 1 1/2" HEX STUD-PILOT WHEELS

HALTEC NO.	DESCRIPTION	CASE QTY.	FINISH
H-150	For 1 1/2" Hex Stud-pilot Nut	200	Chrome



FOR 33MM HEX FLANGE NUTS (HUB-PILOT WHEELS)

HALTEC NO.	DESCRIPTION	FOR HEIGHTS	CASE QTY.	FINISH
H-180	For 33mm Hex Flange Nut for buses	.886"-1.0"	200	Chrome
H-181	For 33mm Hex Flange Nut for buses	27-31mm	200	Chrome



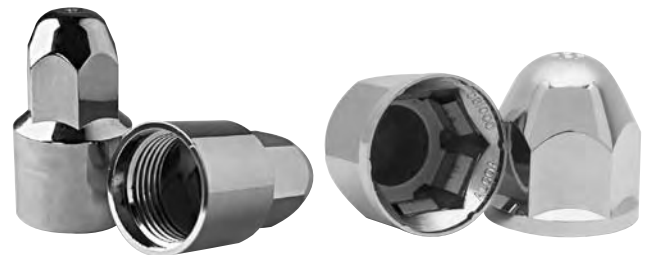
FOR 1 1/2 HEX NUTS (HUB-PILOT WHEELS)

HALTEC NO.	DESCRIPTION	FOR HEIGHTS	CASE QTY.	FINISH
H-182	For 1 1/2 Hex Flange Nut for trucks	1 7/16"	200	Chrome
H-183	For 1 1/2 Hex Flange Nut for buses	7/8"	200	Chrome



FOR ALOCA LUG NUTS FOR 16" & 19" WHEELS

HALTC NO.	DESCRIPTION	FOR HEIGHTS	CASE QTY.	FINISH
H-78	2.125"	.96"	100	Chrome
H-79	1.525" Tall	.96"	100	Chrome
H-190	Hug-A-Lug Push-On	Fits 1 1/16" nuts	200	Chrome



ALCOA