

310

### 310 VALVE ADAPTER GUN

Has a 1/2" female pipe thread and will attach to any calcium tire filling pump, it will extract the valve core from a Standard Bore valve or the core housing from a tractor valve. It will securely hold the valve core or core housing up in the gun body during tire filling or evacuation of liquid from a tire. Due to the design, it will permit faster evacuation of liquid from a tire than with other adapter guns. Replaces Deming #1010.

#### PARTS LIST:

FP-134 Large Bore Core Remover  
 FP-135 Adapter for Standard Valve (Equipped with FP-136)  
 FP-136 O-Ring for FP-135 Adapter  
 FP-137 Standard Valve Core Remover  
 FP-138 Ejector Union (Equipped with FP-146)

FP-139 Gasket  
 FP-140 Stem  
 FP-141F Adapter Body  
 FP-142 Stem Sealing Nut  
 FP-143 O-Ring for FP-142 (Stem Seal)  
 FP-144 Hand Wheel  
 FP-145 Lock Nut  
 FP-146 Teflon Gasket

### AQF-1 AQUA QUICK FILL HALTEC AQF-1

Patent No. 5.007.448 Haltec's Aqua Quick Fill is a simple, time-saving tool that allows the user to fill a tractor tire or large off-the-road tire with liquid, and do other tasks while the tire is being filled. No longer does the user have to stand by and vent the excess air pressure. With the AQF-1, air is automatically vented through a side port while the liquid is being injected into the tire. When the tire is filled, the water escapes from the vent hole, indicating that the tire is full.



### FLUID CONNECTORS

Coupler N-1451, 1/2 NPT female thread. Designed specifically for fluid use.

### NIPPLE N-1452

1/2 NPT male thread. For fluid use.



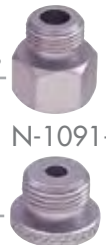
N-1451

### WATER ADAPTER

N-1091 For liquid fill tires



N-1091



N-1091-2



N-1091-3

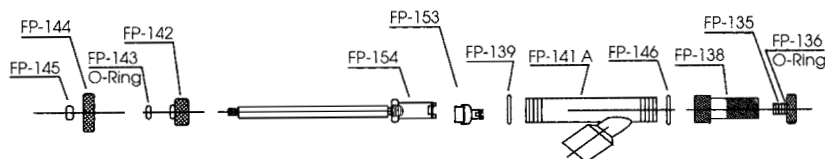


### N-1057

Flexible extension for 310 gun.



N-1057



307

### 307 URETHANE FILL ADAPTER

Attaches directly to the urethane pump discharge hose with a 1/2" female pipe thread. An adapter bushing is provided to attach the gun union to a standard size tire valve. By removing the adapter bushing, the union can be attached to a tractor-type valve (TR-218A), a grader valve (TR-618A), or any Large Bore valve (TR-650). Delrin plugs are used to seal the valve after the tire is filled with urethane up to the desired pressure. The plugs are self-threaded into the valve by pushing in the hand wheel and turning clockwise. This permanently seals the valve and the adapter can be removed immediately. This is a much more positive method of sealing a tire that has been filled with urethane.

#### PARTS LIST:

FP-135 Adapter for Standard Valve (Equipped with FP-136)  
 FP-136 O-Ring for FP-135 Adapter  
 FP-138 Valve Stem & Ejector Union (Equipped with FP-146)  
 FP-139 Rubber Gasket  
 FP-141A Adapter Body  
 FP-142 Stem Sealing Nut  
 FP-143 O-Ring for FP-142 (Stem Seal)  
 FP-144 Hand Wheel  
 FP-145 Hex Lock Nut

FP-146 Teflon Gasket  
 FP-153 Collet Adapter for Standard Valve Plug  
 FP-154 Stem & Collet  
 FP-155 Snap Ring for FP-153  
 FP-156 Snap Ring for FP-154  
 P-250 Standard Valve Delrin Plug  
 P-251 Tractor & Grader Valve Delrin Plug  
 P-252 Large Bore Valve Delrin Plug  
 P-250F European Standard Valve Delrin Plug

## LIQUID FILL